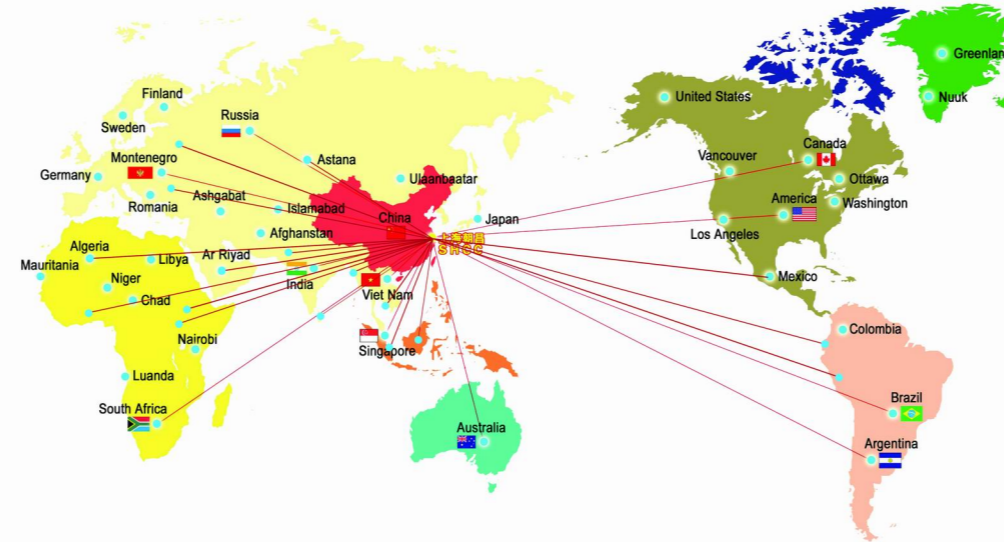


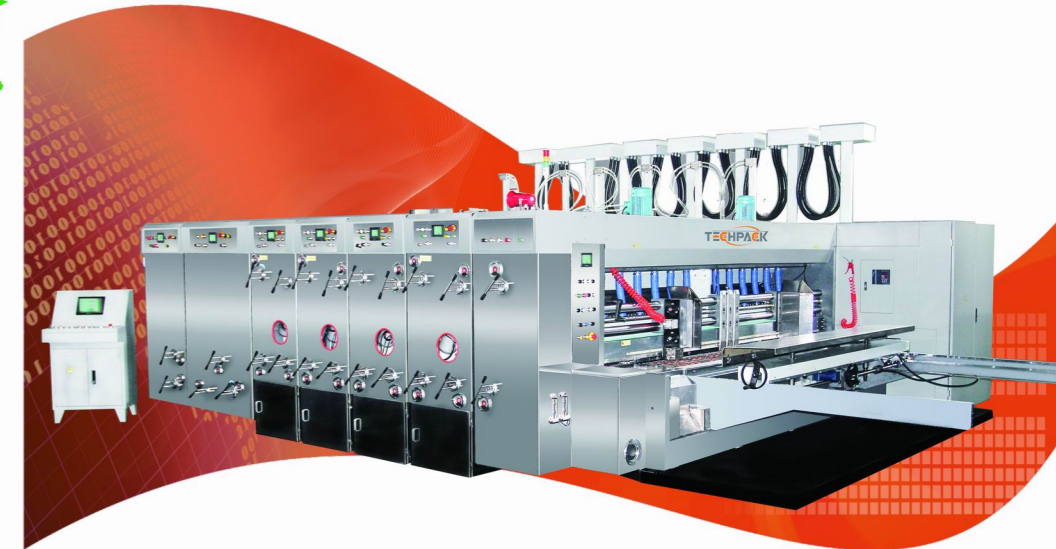
## DAF Technical Specifications

Model	DAF1220	DAF1224	DAF1328	DAF1432	DAF1438	DAF1638	DAF1832
Max design Speed (sheets/min)	220	200	200	180	180	160	160
Max feeding size(mm)	980×2100	1200×2600	1200×2850	1400×2600	1400×2850	1600×2850	1600×3350
Min Feeding size(mm)	260×650	350×650	350×650	350×650	350×650	450×700	450×700
Skip feeding size(mm)	1200×2100	1500×2600	1500×2800	1800×2600	1800×2850	2000×2850	2000×3350
Max Printing Area(mm)	920×1920	1180×2430	1180×2680	1380×2430	1380×2680	1590×2680	1590×3180
Max Slotting Depth(mm)	260	300	300	350	350	400	400
Printing plate thickness (mm)	7.2						
Min Slotting gap(mm)	Standard	150×150		190×190			
Min Slotting gap(mm)	Optional	265×60		285×85			

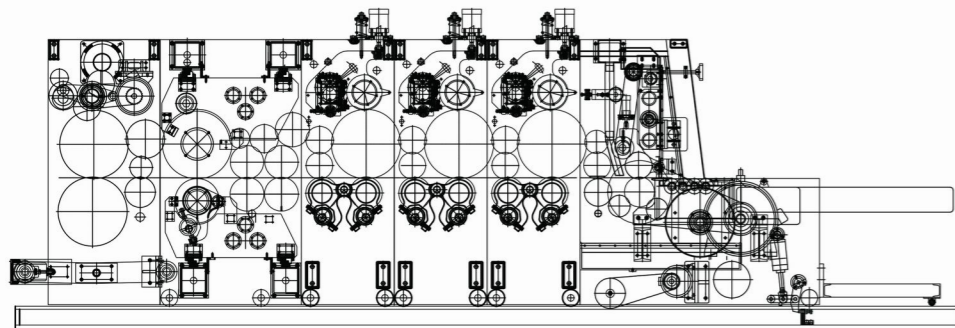
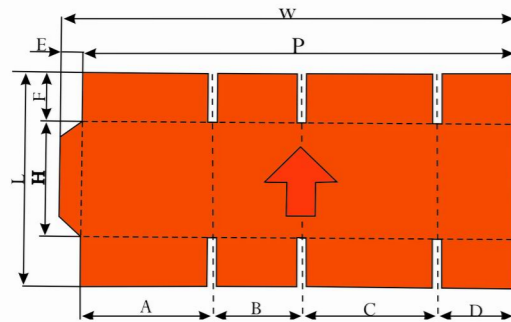
## TECHPACK 全球营销网络 Global Marketing Network



## DAF-TECHPRO 神鹿系列全电脑印刷开槽模切机 COMPUTERIZED FLEXO PRINTER SLOTTER DIE CUTTER



☆ Subject to change and improvement without notice.



## TECHPACK MACHINERY

TechPack Machinery Industrial Co., Ltd.  
 Add: No. 258, Wangqian Rd. Fengxian Distt. Shanghai, 201406, China  
 Tel/Fax: +86 2165906339  
 Mobile/WhatsApp: +86 13917556856  
 Email: info@techpackmachinery.com  
 Website: www.techpackmachinery.com



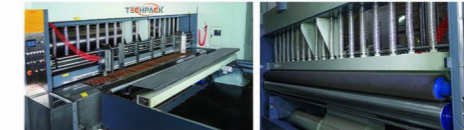
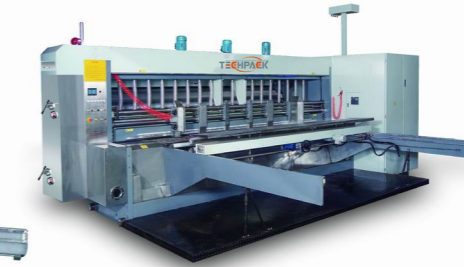
## TECHPACK MACHINERY

### Advantages

- ◆ Robust machine building with high speed, precision & long-term stability
- ◆ Top industrial standard for both mechanical and electrical parts
- ◆ One button job setup for fast changeover
- ◆ Repeat orders can be stored and recalled by PLC control
- ◆ 20CrMnTi transmission gears with extended quenching & grinding
- ◆ Precise grinding, chrome plating and static/dynamic balancing for all cylinders
- ◆ Optional PLC controlled gap/pressure setting for easy and fast operation
- ◆ All electrical parts used are world renowned brands to ensure stability
- ◆ Remote controlled maintenance for quick trouble shooting solutions



### Lead Edge Feeder



- ◆ Auto lead edge feeder with vacuum assist for high-speed feeding
- ◆ Double feeding rubber rolls with pneumatic cushioning to minimize board caliper loss
- ◆ Brush and powerful vacuum suction for effective dust cleaning
- ◆ Feeding rubber roll with quick-change design, for easy maintenance
- ◆ Computerized/motorized setting for side guide move, with squaring function
- ◆ Computerized touch screen for job setting, with auto zero
- ◆ Feeding wheels with easy taking off /fix design for easy maintenance
- ◆ Whole machine lock to rail with integrated safety protection system

### Printer



- ◆ Roll-to-roll transfer, pull wheel with fast move and self-lock
- ◆ All rolls equilibrium balanced for max running steadiness
- ◆ Patent design for inking rolls with premium printing quality
- ◆ Heavy-duty cylinders with maximized stability and resilience
- ◆ Auto lift up/down of anilox roll synchronized with feeding on/off
- ◆ Quick-change structure for inking rolls with easy maintenance
- ◆ PLC controlled ink saving/washing system, with ink-shortage alarm
- ◆ Computerized settings with order memory and auto zero
- ◆ Manual/PLC controlled precise pressure setting with digital display
- ◆ Auto resuming printing position after unit move & stereo cleaning

### Slotter



- ◆ Computerized setting all box dimensions with order memory
- ◆ Heavy duty cylinders with thermal treatment for long-term running stability
- ◆ Extra big pre-creasers for better creasing and folding result
- ◆ Duplex creasing with PU wrapping to avoid liner cracking
- ◆ Manual/PLC controlled precise pressure setting with digital display
- ◆ Fast and synchronized settings for pre-creaser, creaser and slotter
- ◆ Flap cutter with elastic design without setting for 3/5ply board
- ◆ Optional handle hole die cutting device

### Die Cutter



- ◆ Computerized setting die cut position with touch screen
- ◆ Precise speed compensation for consistent die cutting size
- ◆ Auto oscillation and auto shaving for longer life of anvil roll
- ◆ Conveyor belt for waste discharge. Vibrator optional for cleaning scraps
- ◆ Automatic anvil renew system for longer anvil using life.
- ◆ Manual/PLC controlled precise die cut pressure setting
- ◆ Automatic engagement between die roll from anvil roll by feeding on/off
- ◆ Optional independent PLC controlled system for anvil roll drive
- ◆ Vibrator optional for thoroughly cleaning die cut scraps