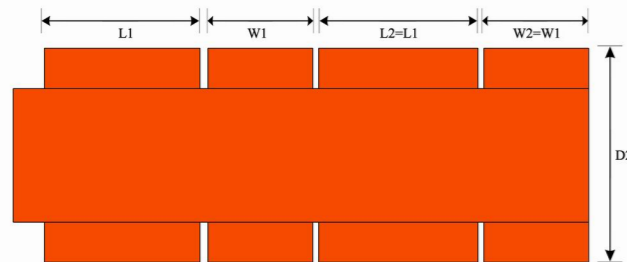


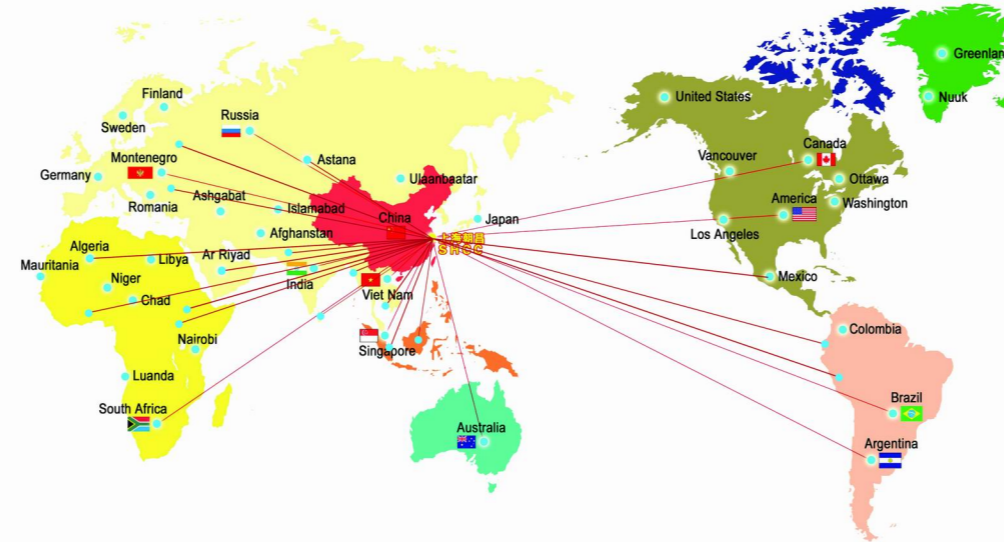
## Technical Specifications

Model		DAFS20	DAF1224	DAF1228
Max design Speed(sheets/min)		350	350	350
L2(mm)	Max	700	700	800
	Min	230	230	230
W1(mm)	Max	700	750	800
	Min	130	130	130
L2+W1(mm)	Max	1000	1200	1400
	Min	360	360	360
D2(mm)	Max	900	1200	1200
	Min	300	300	300
Board/flute type		E-AB flute		

☆ Subject to change and improvement without notice.



## TECHPACK 全球营销网络 Global Marketing Network



## TPM-FFG 全伺服高速糊箱机 Servo Driven High-Speed Inline Folder Gluer



## TECHPACK MACHINERY

TechPack Machinery Industrial Co., Ltd.

Add: No. 258, Wangqian Rd. Fengxian Distt. Shanghai, 201406, China

Tel/Fax: +86 2165906339

Mobile/WhatsApp: +86 13917556856

Email: [info@techpackmachinery.com](mailto:info@techpackmachinery.com)

Website: [www.techpackmachinery.com](http://www.techpackmachinery.com)



## TECHPACK MACHINERY

### Advantages

- ◆ High speed & precision with long-term running stability
- ◆ CNC touch screen settings with order memory for fast job setup
- ◆ Fully servo motor drive, with Mitsubishi servo system and PLC
- ◆ Even and consistent glue application
- ◆ Fishtail with in  $\pm 1$ mm, and gap within  $\pm 2$ mm
- ◆ Side creasing and side guides for better folding result
- ◆ Vacuum transfer with belt convey to avoid slippery and fishtail problem
- ◆ Servo driven stable box convey with balanced and precise counter ejection
- ◆ All moving parts by imported screw shaft and linear guide

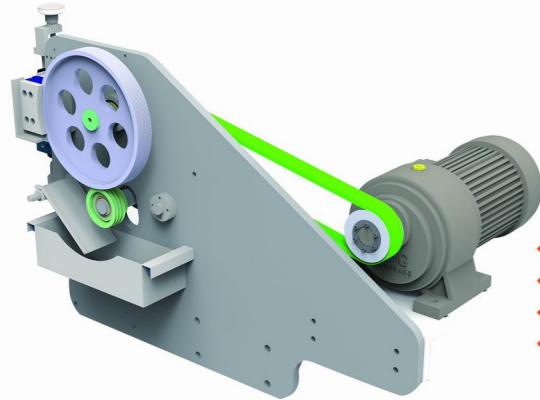


### Feeder



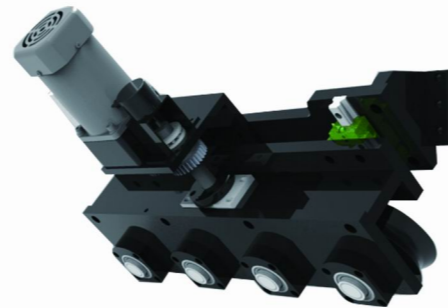
- ◆ Upper/lower belt adjust for 3/5ply E to AB flute board
- ◆ Motorized setting glue application position
- ◆ Optional with scrap cleaning system

### Gluer



- ◆ Wheel type glue application
- ◆ Easy operation and maintenance
- ◆ Even and consistent glue application
- ◆ Valco glue spray system optional

### Folder



- ◆ Two servo motors for belt and two servo motors for alignment wheels
- ◆ Vacuum transfer for main belt to avoid board slippery and fishtail problem
- ◆ Strong & Robust beams with maximum running stability
- ◆ Side pressure by the folding blade for more accurate folding line
- ◆ 90°correcting wheels for controlling folding angle in the middle of the folding beam
- ◆ Lower folding belts driven by servo motors and speed adjustable
- ◆ Folding beams with auto motorized control
- ◆ Gantry structure to ensure machine stability at high running speed

### Counter ejector



- ◆ Photo sensor for precise counting
- ◆ Five servo motors for precise counting, stacking and ejection at high running speed
- ◆ Pneumatic stacking and powerful blower for better alignment of boards
- ◆ Rear baffle can be adjusted according to board size
- ◆ Upper conveyor belt position can be adjusted automatically according to board stacking height
- ◆ Ejection part can move left/right to ensure the boxes are stacked in center of the machine