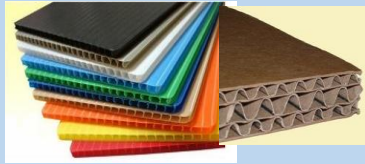


PROCESS CONTROL & QUALITY CONTROL TESTING EQUIPMENTS



Paper



Duplex Board



Corrugated Board



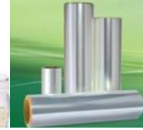
Corrugated Box



PET



Films & Foils



Tubes



Cones



Drums & Canes



Tapes



**Global
Engineering
Corporation**



Labels



Fiberboard

PACKAGE & PRINTING TESTING EQUIPMENTS

Complete testing solutions for sample preparation, surface testing and strength testing. Equipment's are confirming to national standards (IS, FEBM etc.) and international standard (TAPPI, ASTM, BS, AS/NZ, SCAN, DIN etc.)



**Box Compression Tester
(GEC-P40401)**

Box Compression Tester is a heavy-duty tester designed to determine the ability of Corrugated or Solid fiber shipping containers to resist external compressive forces during transit & storage.

Specification:

- Capacity: 10 KN (1000 Kgf) to 50 KN (5000 Kgf),
- Test Speed: 5 to 50 mm/min
- Standard Press Platens. Admit between plates: 25mm ~ 1100mm
- Accuracy: $\pm 1\%$ of reading
- Power Supply / Power Requirement: 3 phase, 440 volts, 50 Htz / 1 kW

Standards:

TAPPI T804, ISO 12048, DIN 51221 class 1, ASTM E-4, BS 1610:1985 Grade 0.5
ISO 12048, ASTM D642, ASTM D4169



**Tube/Core/Cone Collapsing Tester
(GEC-P40402)**

Collapsing strength tester is designed in such a manner that gradually increasing force is generated & applied on the surface of carriers. The sharp collapsing point can be easily detected on a dial and a suitable reading can be taken.

Specification:

- Capacity: 1000 Kgf
- Least Count: 9.15
- Accuracy: 2% of full scale
- Test Adopters OD: Upto 100 mm
- Air Pressure: 6 Kg/cm²

Standards:

TAPPI, SCAN, ASTM D 3654



**Concura Medium Flutter
GEC-P40403**

Concura Medium Flutter is used to determine the flat crush resistance/CMT value of a packaging or similar grade of paper.

Specification:

- Flute Type : 'B' Flute Rolls
- Flute Rolls :Two
- Revolutions of Flute Rolls :4.0 per min
- Force between Rolls :Spring loaded force adjustable to 10 Kgf ± 1
- Number of teeth :84
- Depth of teeth :4.75 mm
- Temperature: Adjustable and Thermostatically controlled upto 1800C
- Power Supply :440 V,3 Phase 50 Hz

Standards:

ISO 7263, DIN-EN ISO 7263, TAPPI T809, SCAN P27, PAPTAC D29, T 824, ISO 7263, SCAN P42



**Puncture resistance tester
(GEC-P40404)**

Puncture Resistance Tester is designed to measure the energy required to puncture corrugated board and therefore help assess the protective qualities of that board. Resistance to puncture is defined as the energy required to force a puncture head of specific design through a test piece under clearly specified conditions.

Specification:

- Sample Size: 175 * 175 mm
- Clamping Force: Between 25 Kgf – 100 Kgf
- Energy Range / Scale division: Kgf/cm or Nm / Kgf
- Energy Range / Scale division: (0-58.5 / 0.2), (0-200 / 2), (0-400 / 5), (0-800 / 5), (0-1600 / 10)
- Power Supply: 440 V, 3 Phase 50 Hz

Standards:

TAPPI T-803, ISO 3036, SCAN P23 ASTM D-781, DIN 53142



**Ink Rub Resistance Tester
GEC-P40405 (H)**

Rub Tester is professionally designed for the abrasion resistance test of surface coating layers of printed materials, e.g. ink layer or photosensitive (PS) coating. This instrument could effectively analyze the problems of poor abrasion resistance, ink layer falling off and poor hardness of coating layers of printed materials.

Specification:

- No. of discs: Two (2), Test beds diameter: 2" & 4"
- Calibrated pressure weight: ½, 1 & 2 Lbs. / Sq. inch
- Blower: High Speed
- Power Supply: 1 phase, 220 V AC, 50 Hz

Standards:

ASTM D5264



**Rub Proofness (Scuff) Tester
GEC-P40405**

Rub/Scuff Tester measures resistance to rubbing of printed paper or board. It can also be used to measure colour transfer from printed or coated material during rubbing. It evaluates the extent of colour transfer from printed or coated materials due to rubbing - a condition which frequently occurs during the handling and shipment of packaged goods.

Specification:

- No. of discs: Two (2), Test beds diameter: 2" & 4"
- Calibrated pressure weight: ½, 1 & 2 Lbs. / Sq. inch
- Blower: High Speed
- Power Supply: 1 phase, 220 V AC, 50 Hz

Standards:

BS 3110



**Vibration Tester
(GEC-P40406)**

Vibration Tester is carried out to assess the performance of a filled package in terms of its strength or protection that it offers to its contents when subjected to vibration. This test method simulates the transport hazards, to produce an equivalent effect or damage during the test.

Specification:

- Floor Space Requirement: 1200mm x1500mm (Machine) / 450mm x 450mm (Panel)
- Table Size: 1000 mm x 1000 mm
- Test sample weight: 50 kg (Maximum)
- Railing Guard Height: 300 mm
- Table: Wooden (Laminated)
- Amplitude: Fixed 25 mm
- Frequency: Variable 100 rpm to 400 rpm (1.6 Hz to 666Hz)
- Vibrations: Harmonious : In phase - out of phase (90° & 180°) Random
- Electric Motor: 1 kW, 3 Phase, 750 rpm
- Power Requirement: 1.5 kW 3 Phase+ Neutral

Standards:

TAPPI T-817, ASTM D 999 - 91, IS : 7028 (Part II) - 1973



**Carton Board Creaser
(GEC-P40407)**

Carton Board Creaser is used for testing the reusability of carton board. The relationship between board stiffness and crease recovery (spring back) is an important factor in the performance of cartons. Board stiffness is determined by bending a 50mm (2 in.) length of board through a 15o angle. Crease recovery is determined by holding a formed crease at 90 and measuring the recovery force after 15 seconds.

Specification:

- Board caliper range: 300-1000 Micron (0.012-0.040 inch)
- No. of Channels: 18 creasing channels between 1 –4.06 mm (0.04-0.016 inch)
- Crease Depth: Variable
- Creasing rules: 2PT, 3PT and 4 PT upper chase
- Grooves width: 0.055, 0.075, 0.095 inches
- Width of rules setting: 0.028, 0.042 and 0.056
- Pressing action: Press ram, forward or backward stroke
- Power Requirement: 0.5 kW 1 Phase, 50 Hz

Standards:

BS 6965



**Tape Tensile Tester /Laboratory
Seal/Peel Strength Tester
(GEC-P40408)**

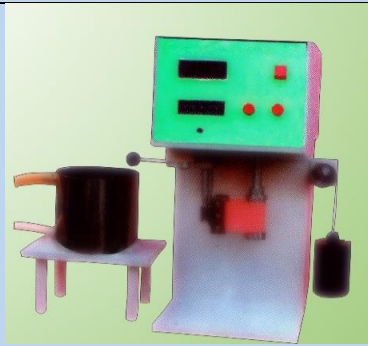
It is a highly specialized quality control instrument specifically developed to evaluate the interfacial adhesion properties of flexible packaging material, coated packaging films and similar materials.

Specification:

- Capacity: 100 Kg
- Least Count: 1 gm
- Test Speed: 100 mm/min / 254 mm/min / 300 mm/min
- Power Requirement: 0.5 kW 1 Phase, 50 Hz

Standards:

TAPPI, SCAN, ISO



**Abrasion Tester
(GEC-P40409)**

Abrasion Tester is designed to determine the wear and durability of paper and board, ceramics, plastic, textile, rubber, flooring, and painted lacquered and electroplated surfaces.

Specification:

- Test Area: 100 cm
- RPM: 70-75 per min
- Type: Twin shaft with two platform
- Abrasive wheel: Dia. 50 mm and 12.75 mm thick
- Counter: Predetermined 6 digit Digital revolution counters
- Dead weight load: 250 & 500 gf

Standards:

TAPPI T476, DIN 53863/1, DIN 53109



**Drop Tester
(GEC-P40410)**

Drop Tester is used to determine the ability of fiber board containers to withstand vertical impact in free drops. The test may be performed as a single test or multiple test to determine and analyses the conditions that occur on a package during handling & transit. It serves as effective equipment for package design and performance analysis before production and use. Essential for quality control and development for consumers of corrugated and solid fiberboard, shipping containers, etc.

Specification:

- Max. Size of the package: 600 x 600 x 600 mm
- Max. Weight of test package: 75 kg
- Drop Heights: 700 – 2000 mm
- Drop heights interval: 75 mm
- Floor Space: 1100 x 880 mm
- Required Height: 2450 mm

Standards:

TAPPI T-802 OS 75, ASTM D 5276 - 92, ISO 2248 method A, IS 7028 (Part VI)



**Crease & Board Stiffness Tester
(GEC-P40411)**

Crease & Board stiffness tester measures board Stiffness and crease recovery. It gives board manufacturers, printers and packing companies the ability to predict the 'run ability' of a sample board or finished carton before committing valuable materials or machine time.

Specification:

- Range: 0-399 gram force
- Display: Digital
- Accuracy: $\pm 2\%$ of reading
- Test Time: 15 seconds
- Power Supply: 220 V AC/50 HZ I Phase

Standards:

BS 6965,3748, ISO 2493, TAPPI T556, DIN 53121, SCAN P29



**Carton Opening Pressure Tester
(GEC-P40412)**

The Carton Opening Pressure Tester, is a bench mounted, electrically operated machine. The machine is designed to measure the opening force of flat stacked cartons. The test determines force per unit width required to open a carton and the percentage deflection at that maximum point. The test is performed using the constant rate of force method.

Specification:

- Travel: - Max. Height 300 mm
- Travel: - Min. Height 25 mm
- Load: - Max. Capacity 5,000 x 1g



**INK PROOFING KIT
(GEC-P40413)**

Ink proofing kit provides a fast, inexpensive method for making an accurate color proof for whatever purpose the printer or ink maker may need. Provide an inexpensive fool proof method of checking ink color and strength for the ink maker and printer.

The kit consists of: a smooth flat plate, a steel measuring bar and plunger for obtaining an accurate predetermined volume of ink, a steel spatula for filling the measuring bar and pipe cleaners for cleaning the holes in the measuring bar.



GLOBAL ENGINEERING CORPORATION

PROCESS CONTROL EQUIPMENTS & QUALITY CONTROL



EQUIPMENTS FOR

PULP, PAPER, TISSUE, PACKAGING, PRINTING, PLASTIC & CONVERTING ETC. WITH

AMC, SERVICING, REPAIRING, CALIBRATION & CERTIFICATION OF ANY MAKE EQUIPMENTS WITH SPARES REQUIRED

VISIT US : WWW.GECPAPER.COM & WWW.GLOBALENGINEERINGCORPORATION.CO.IN



HEAD OFFICE:

Sankalp Tower,
Office 16, First Floor Plot No. 8,
Near Queens Road Turn, Khatipura Road, Vaishali
Nagar,
Jaipur - 302012, Rajasthan, India
Telephone: +91-141-2240290
Mobile: +91-9351434720
E-mail: sales@gecpaper.com
service@gecpaper.com

FACTORY ADDRESS:

A) H-166, Road No. 9, RIICO Industrial Area
Bindayaka, Near Fire Station Jaipur-302012
Rajasthan
MB: 7073325552

B) 10, Monika Tower, Chandan Park,
Bhayander (East), Mumbai-401105

C) KH No. 1103/2M & 1104/1MM
Gram Salampur, Rajputana Pargana,
Bhagwanpur, Teh. Roorkee-247667,
Dist. Haridwar (U.K)